

# Kilburn News

OCTOBER / NOVEMBER 2020

KILBURN PARISH COUNCIL

## NHS Coronavirus Update

National Coronavirus updates and restrictions are constantly updated, so please use the Derbyshire County Council website [www.derbyshire.gov.uk](http://www.derbyshire.gov.uk) for advice and Information.

On the 22nd September the government announced further national measures to address rising cases of coronavirus in England.

It is critical that everybody observes the following key behaviours:

- **HANDS**—Wash your hands regularly and for at least 20 seconds.
- **FACE**— Cover your face in enclosed spaces, especially where social distancing maybe difficult and where you will come into contact with people you do not normally meet.
- **SPACE** — Stay 2 metres apart where possible, or 1 metre with extra precautions in place.

The government's expectation is the new measures will need to be in place until March and all the information can be found online at <https://www.gov.uk/government/news/coronavirus-covid-19-what-has-changed-22-september>.



### Want the latest on Coronavirus in Derbyshire?

Get all the latest health service information for Derby and Derbyshire in one place during the COVID-19 (Coronavirus) pandemic...

Visit: [www.joinedupcarederbyshire.co.uk/public-info-covid-19](http://www.joinedupcarederbyshire.co.uk/public-info-covid-19)



## Kilburn Parish Council



The Council continues to meet via zoom on the 2nd Monday of each month at 7pm. Any parishioner wishing to attend should contact the Clerk.

Following the ongoing developments with COVID-19 and legislation not allowing live events, it has been decided that the Remembrance parade will be run virtually for 2020. A link to a live zoom feed on the parish council website will enable people to be able to view the event. The event will be attended by Parish Councillors and local clergy to lay the wreaths and say a prayer to commemorate all of those who have fallen.

We are testing this new type of technology as we may also have to host the Christmas light switch on in the same way. We hope you will all join us on the day as it has been such a popular event each year. The event link will be posted prior to the day so keep an eye out for it.

Thank you to all of those parishioners who have offered to deliver the Kilburn News in their area. However, we still require additional volunteers and you should see the separate notice for the areas concerned.

In the meantime – copies of the Kilburn News will be available at establishments around the village and also in special outdoor holders adjacent to the noticeboards as well as on the Parish Council website.

The external Audit of the accounts for the year ending 31 March 2020 has been completed and the documents are available on the website.

Members of the Council recently met at the nature reserve at Rawson Green in order to agree a plan to improve the site. It is planned to apply for a Grant from Derbyshire Environmental Trust to enable work to proceed.

Bywell Lane has been a cause for concern for some time. The tree roots are protruding through the tarmac making the surface very uneven making it difficult for pedestrians, the disabled and parents with pushchairs. It has been reported to Derbyshire County Council a number of times and the Council has now asked our County Councillor to take up the matter on our behalf.

### **2020 Parish Council Dates**

Monday 12th October

Monday 9th November

Monday 14th December

## Volunteers Required!

Despite advertising on several occasions for volunteers to deliver the bi-monthly Kilburn Newsletter, we unfortunately still require a volunteer for each street listed below. If we are unable to find a volunteer to distribute the newsletter in the below areas, they will no longer receive a copy and will need to collect one from a local amenity.

Windmill Avenue	Dale Park Avenue
Church Street	Lapwing Close
Bottle Brook	Edward Crescent
Pickburn Gardens	The Flat
Mayfield Avenue	Shaws Yard
The Walk	Ryknield Road
Coppice Close	Linden Close
Hillcrest Drive	Beech Close
Kingsway Crescent	Rowan Drive
High Street	Bown Close



**If anybody is available to volunteer, please email the clerk via email at [samatthews2001@aol.com](mailto:samatthews2001@aol.com) and she will pass your details on.**

## Cllr Kevin Buttery – Keeping you Updated



I have still to see a meaningful report on the progress of AVBC's Local Plan, which was withdrawn well over a year ago. The proposed sites being considered as part of the Strategic Housing & Economic Land Availability Plan have indicated over 4,000 houses being earmarked for this localised area.

The legal interpretation of what I can and cannot disclose on the proposed sites to residents, like many things in law, is open to different interpretation. Therefore, I have taken the decision at this time, to pass no comment until they have been officially assessed by interested parties and put forward by AVBC into the public domain. I would remind everyone that, just because a site is allocated within a Local Plan, this does not mean it will get through planning for adoption. Likewise, just because a site is not included in a plan, this offers no safeguard that it will not pass a planning application and become a future housing site. AVBC has always struggled to achieve an Adopted Local Plan because Government Planning Inspectors did not accept it had a robust 5 year housing supply. Despite AVBC's recent continual claims that it has a 5 year supply of 5.41 years, AVBC lost a recent planning appeal in Belper, held by the Secretary of State, when the council accepted its housing supply was actually 3.42 years.

The Secretary of State also stated that AVBC's current policies have little, to no weight, in preventing housing being built anywhere within the Borough. This is the price you pay for having absolutely no Local Plan or Emerging Plan in place.

AVBC has published its Key Performance Indicators for the year, which show a 25% increase in crime in Amber Valley. Figures relating to satisfaction rates for service delivery are missing.

In respect of Government funding to assist local residents and businesses affected by Covid-19, there has been 2,138 grants totalling £24.7m paid out to small businesses. There have been 243 Discretionary Grant payments made, plus 2,395 residents have received support from the £1m Council Tax Hardship Fund.

National Coronavirus updates and restrictions are constantly updated, so please use the Derbyshire County Council website [www.derbyshire.gov.uk](http://www.derbyshire.gov.uk) for advice and Information. This is an anxious time with children returning to school and their adjustments to the 'new normal' way of life in a bid to minimise the spread of coronavirus. The website therefore covers advice in respect of sending your child to school, face coverings, social bubbles at school, outbreaks, symptoms, test & trace and how to book a test either online or by ringing 119. Two local schools have received funding support from the County Councils £1.9m funding initiative for building improvements.

The Government white paper on devolution and local recovery is expected in the next few weeks. This will address Local Government reform. Derbyshire County Council has agreed to put forward a proposal known as Vision Derbyshire, which is a commitment to work with district and borough councils to achieve the best possible deal for residents, communities and businesses. If a deal cannot be achieved with Vision Derbyshire either through all the involved councils not agreeing to the changes that must happen, or because the government requires a different solution, DCC will seek to establish a single unitary authority covering the whole of Derbyshire. Whereas Derby City Council are looking at different options, such as increasing its boundary by incorporating Amber Valley, Erewash and South Derbyshire District Councils into the City.

This issue has been rumbling on for several years, but Covid-19 and the subsequent impact on public finances has driven the agenda to look at new ways of how to deliver council services in a streamlined cost effective way. Derby City has been a Unitary Council for many years. It effectively means there will only be one or two councils delivering all services, instead of the current 10 different councils. It is anticipated that local government reform could offer considerable annual financial savings running into the tens of millions of £'s.

Storms in November last year, plus storms Ciara and Dennis in February this year resulted in extensive flooding across Derbyshire. It is therefore clear these types of events are increasing and will continue to do so given climate change projections. DCC as the lead Local Flood Authority, has agreed to recruit an additional engineer to work with residents and businesses in delivering flood mitigation solutions.



**DERBYSHIRE**  
County Council

If there is an issue I can help you with, please contact me on 01332 781092 or [kevin.buttery@derbyshire.gov.uk](mailto:kevin.buttery@derbyshire.gov.uk)

### Council Details

- Cllr D Hall (Chairman) – 01332 881492
- Cllr D Earnshaw (Vice Chairman) - 07967 550158
- Cllr D Beadell - 07514 956142
- Cllr P Rowley - 01332 882357
- Cllr E Hetherington – 01332 881354
- Cllr C Riley - 07889 980195
- Cllr M Rowe– 07488 964335
- Cllr B Lambert -
- Cllr K McDonald - 07920 802808
- Ms S Matthews (Parish Clerk) – 01332 671513 or email: [samatthews2001@aol.com](mailto:samatthews2001@aol.com)

# Kilburn Neighbourhood Watch



Dark nights are nearly upon us and Kilburn residents are being advised not to be in the dark when it comes to securing their homes.

As the days get cooler and the nights draw in, criminals will exploit the cover of darkness if they can, so residents need to make sure their homes and cars are not easy targets.

Figures show there is a trend for burglary to increase when the clocks go back in autumn and to continue to rise until the clocks go forward again in the spring.

Crime prevention doesn't have to cost a lot of money, there are simple measures you can take to make your home look occupied and reduce your chances of being a victim.

To keep opportunist burglars at bay:

- Always keep doors and windows locked, even when you're in. Remove the keys from the lock and keep them out of view or reach.
- Use timer switches to turn lights on when you are out. Alternate the times and lights that you use.
- Make sure your alarm and any outside lights are in working order. Always activate your alarm when you leave the house and go to bed.
- Don't leave items of value on show through ground floor windows (i.e. laptops, tablets, mobile phones, car keys etc.)
- Lock your garden gates and side entrances. Keep ladders and tools securely stored away, don't leave them outside where they could be used to break into your home.

**Look out for your neighbours, especially the elderly and vulnerable, and remind them to follow the STOP, CHAIN and CHECK rule when people call at the door:**

**STOP: If you are not expecting anybody and they don't have an appointment, don't let them in.**

**CHAIN: Use your door chain or bar before opening the door.**

**CHECK: Ask to see ID and double check this.**

- Local residents are encouraged to contact the police if they have any suspicions about doorstep callers or witness any suspicious behaviour.

## Speed Watch

Since the last edition of Kilburn News, our local community Speed Watch group have been very active across Kilburn and Denby recording some very good (but shocking) results on our roads. Please can we ask that residents slow down when passing through the parishes of Kilburn & Denby as there have been 5 speed related road traffic collisions over the past few weeks.

Below is a list of dates, locations and the number of cars caught speeding to give residents an idea of how big a problem we have across the two parishes.

Date	Location	Number of cars speeding	Road Speed	Highest Recorded Speed
11/07/2020	Rykniel Road, Kilburn	60	30mph	43mph
14/07/2020	Woodhouse Road, Kilburn	13	30mph	41mph
15/07/2020	Church Street, Kilburn	0	30mph	-
30/08/2020	Woodhouse Road, Kilburn	36	30mph	54mph
04/09/2020	Derby Road, Denby	11	40mph	53mph
07/09/2020	Rykniel Road, Kilburn	39	30mph	50mph
11/09/2020	Church Street, Denby Village	17	30mph	46mph
15/09/2020	Woodhouse Road, Kilburn	2	30mph	36mph
17/09/2020	Rykniel Road, Kilburn	27	30mph	58mph

We are still actively looking for volunteers across Kilburn & Denby who would be willing to volunteer two hours of their time a week to help us carry out speed checks. All training will be provided by Derbyshire Constabulary and equipment is provided for you at the check site.

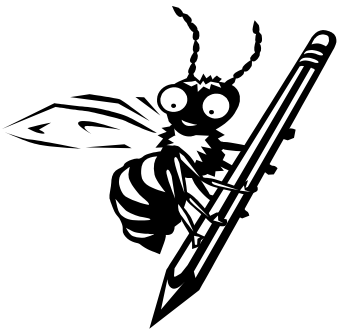
Anybody who wishes to volunteer their services is asked to email the Clerk via email [samatthews2001@aol.com](mailto:samatthews2001@aol.com) and she will pass your details onto the Speed Watch Co-ordinator.



As ever should a member of the local community have any concerns or wish to highlight an incident with the team, you can do this by ringing 07756762192, emailing [KilburnNHW@outlook.com](mailto:KilburnNHW@outlook.com) or sending us a message on our Facebook Page 'Kilburn & Denby Neighbourhood Watch'



## Kilburn Infant School News.



We have had a very busy but unusual start to our school year! Following DFE/LA guidance and risk assessments, all of our children have a staggered start and finish to the school day, and each of our year group 'Bubbles' remain separate and aren't able to mix with each other. Children cannot sit on a group of tables together and pupils in Years 1 & 2 sit at forward facing tables like an old-fashioned classroom!

Tables for lunch are not in groups but are in 3 long Year 'Bubble' lines – a bit like 'The Great Hall' at Hogwarts!! The school staff are all wearing visors and if they have any close contact with the children then they change into full PPE, and we are all washing, washing, washing our hands!!



It is much quieter in school than normal as at the present time we cannot have visitors or parents into the buildings. We are now organising the strangest Parents Evenings ever with the teacher sitting near to an outside door and the parent sitting outside!

However, the important thing is that the school is open and we are all here supporting the children to 'catch-up' on any missed learning through the lockdown.

We are running a 'Recovery curriculum' with the emphasis on Communication & Language, Physical, PSHE, Reading, Phonics, Writing & Maths.

Despite our curriculum looking a little bit different than usual, we are trying to offer as much of a broad & balanced curriculum as possible. Our classes have started their new learning themes with 'Memorable Experiences' including a Superhero Day for Year 1 Fantastic Foxes, and a walk-around the school for our Reception Marvellous Mice.

The Year 2 Outstanding Owls enjoyed a special outside activity afternoon, roasting marshmallows, making Smores and Streamers, investigating with magnifying glasses, and collecting natural materials to make picture shapes with.



## Kilburn Infant School News.

Our special 'Sports Thursdays' have begun again with Mr Smith, our Amber Valley Coach, and our Nursery children are back in the Junior School Nature Reserve weekly for their 'Woodland Wednesdays' Forest Schools.

All children have taken part in the 'Jeans for Genes' charity fundraising day and we will also be taking part in 'Children in Need' later in the term. Our Harvest collection will be donated to the local food bank charity, 'Hope for Belper'.



And finally we would like to say a huge **WELL DONE** to all of our children, who have been asked to do a lot of not very nice things for such a long time – staying inside, not going out to play at the park or visit nice places, missing swimming lessons, football, Rainbows, Beavers, not seeing their Grandmas and Grandads and lots of their family... and now being back at school and having to work extra, extra hard with their learning to 'catch-up'..

### **YOU ARE OUR HEROES!!**

For weekly photos of learning, events, fundraising, visits, & activities, please see our school 'Facebook' page!

Joanne Baillie

Head teacher





## Kilburn Junior School News.

[info@kilburn-jun.derbyshire.sch.uk](mailto:info@kilburn-jun.derbyshire.sch.uk)

[www.kilburnjunior.school](http://www.kilburnjunior.school)



### Back In Business



It has been lovely to see everyone back after the summer break and the issues of the previous months.

I am really pleased with the way all the children have adjusted to some of the changes we have implemented recently and in particular our Year 3 children- they could not have begun their junior school

### A Visit From Mr Stink



Lower school children entered the wood for their first Trailblazer sessions to find non-other than Mr Stink fast asleep on one of our benches!

This was an amazing coincidence Mr Stink is the book they've been studying in class.

After a good poke he awoke and stayed with the boys and girls in the wood.

He turned out to be a wonderfully engaging and kind gentleman and seemed to relish the opportunity to spend time answering questions.

The boys and girls compared their lives to that of Mr Stink and reflected on how grateful they should be for the things they have.

## Police Notice

### Car Set Alight In Kilburn

On Tuesday 22nd September a car was damaged by a fire which we believe was started deliberately.

A BMW parked at a house on Alfred Road was set alight, causing significant damage.

We are asking for witnesses to the fire or anyone with information to get in touch via the following methods and quoting reference 20\*499490;

- Facebook—send us a private message to /DerbyshireConstabulary.
- Twitter— direct message our contact centre on @DerPolContact.
- Website — complete the online contact form [www.derbyshire.police.uk/Contact-Us](http://www.derbyshire.police.uk/Contact-Us),
- Phone — call us on 101.
- You can also call Crime Stoppers anonymously on 0800 555 111.

Message Sent By

**Melissa O’Gorman**

**(Police, Support Staff, Press Office).**



**DERBYSHIRE  
CONSTABULARY**



## **ARTHUR MEDICAL CENTRE**

**Main Street, Horsley Woodhouse, Derby, DE7 6AX.**

**Tel: 01332 880249 Fax: 01332 781269**

**[www.arthurmedicalcentre.co.uk](http://www.arthurmedicalcentre.co.uk)**

We have all lived through a strange and stressful time and as we now enter the next phase of the Coronavirus pandemic we may be starting to feel relieved that life is more normal. However, we must remain vigilant and aware that Coronavirus has been and still is in our community.

For this reason, GP surgeries remain under additional pressure like other businesses as we try to protect you and our team by reducing unnecessary face to face contact with people who might potentially have Covid-19.

You may be able to get help from a local pharmacist or [www.NHS.uk](http://www.NHS.uk). Alternatively, access our e-consultation service from our website's home page [www.arthurmedicalcentre.co.uk](http://www.arthurmedicalcentre.co.uk). Practice team members can use this to help you e.g. with administrative issues, a vaccination question, a medicine enquiry or a stable or non-urgent medical problem. There are useful links to help so please read these. It may mean that you can resolve your problem without having to have contact with a clinician at all!

If you do telephone the surgery, some details will be taken by the receptionist as before, to help get your initial appointment with the right team member. This will be a telephone consultation with the pharmacist, nurse or doctor and may be converted into a video call.

Whenever possible, we will try to deal with your problem in this way. However, these appointments often take longer as the team member needs to ask more questions; they are unable to see your body language, expressions or the problem physically. Video or photographs can help with this.



Following this initial consultation, it may be felt that you do need to be seen for a face-to-face appointment. You will be booked in for this additional appointment where you will be seen by the appropriate team member who will be wearing full PPE. You will be asked when possible to attend alone, wearing a face covering and to wait outside until called in.

As you can appreciate, this reduces our capacity as some patients are requiring two appointments to deal with one problem (an initial telephone consultation followed by a face to face appointment). The calls are often complex and take longer. Information we are sharing with you has to be communicated to you in different ways such as sending you documents via text or post.

We do understand that when you are feeling unwell, you want rapid access to advice or reassurance from your doctor or nurse. If you do need to contact us, please inform the receptionist if you feel the problem is medically urgent and has to be dealt with on the same day. However, these appointments need to be to the point dealing only with that urgent medical problem.

Your problem is important to us but if it is not a medical emergency, please accept a routine appointment. The team member you speak with will be under less pressure and be able to spend more time helping you with your problem.

This is more satisfactory for you and will allow for those patients needing to speak to a clinician about a genuinely urgent medical problem to be helped more quickly.

We would like to thank you, our patient community, for the kind words of support and patience we have received during this time. We will continue to help and support you in the best way that we can!



# Kilburn Village Hall

7a Church Street, Kilburn, Belper, Derbyshire DE56 0LU



<b>Monday:</b>	Cookery Classes for 2-4 yrs old	Katie <b>07791721129</b>
	Kilburn Parish Council - Meetings	Parish Clerk <b>01332 671513</b>
<b>Tuesday:</b>	Let's Get Active UK—over 50s	Sarah <b>07585009270</b>
	Burnett Academy	Joash <b>07779521141</b>
	Ladies Keep-Fit	
<b>Wednesday:</b>	Whist Drive	Jenny <b>01773 741586</b>
	Tae Kwon-Do & Self Defence	Shirley <b>07779 812468</b>
	Kilburn Wine Circle	David <b>0115 9303712</b>
<b>Thursday:</b>	Derbyshire Toy Libraries	Anne-Marie <b>07866484550</b>
	Intermediate Dance Classes	Patricia <b>01332 660837</b>
<b>Friday:</b>	Chatterbox Cafe	Terry <b>01332 780486</b>
<b>Saturday:</b>	Tae Kwon-Do & Self Defence	Shirley <b>07779812468</b>
<b>Sunday:</b>	Tae Kwon-Do & Self Defence	Shirley <b>07779812468</b>
	Kilburn Christian Fellowship	Godfrey <b>01332 781200</b>

The Kilburn Village Hall is a fantastic venue, available to hire for family and children's parties, charity events, group activities for all ages, meetings and all kinds of regular or one-off occasions for small groups or up to 120 people. There is a free car park a few metres from the hall. Book early to avoid disappointment.

**Charges:** £12 per hour before 6.00pm - £15 per hour after 6.00pm.

For further information contact the Hall Manager: **07709 818683**

**Kilburn Village Hall is currently closed due to the Covid19 pandemic.**

**The Hall Management are clarifying the Governments 'rule of 6' before deciding to re-open the village hall. Residents should look at the Parish Council website to ascertain up to date information as to the re-opening.**



# Wudhus News – Keeping the Villages Updated

## Weekly Activities at the HW Church Hall

The Hall will open again in a very limited capacity week commencing 14<sup>th</sup> September. The Government have imposed tougher Covid-19 restrictions which will also come into force on that date. The only two hirers (at the moment and for the foreseeable future) will be the Relevétion Dance Academy and Qigong. These two activities are very low impact and accordingly they fall within the strict regulations as they stand at the moment.

**The times and classes are as follow: -**

Activity	Contact details
<u><b>Relevétion Dance Academy</b></u> <b>Tuesdays</b> Grade 1 Ballet 4.30 to 5.15 pm Grade 1 Tap 5.25 to 5.55 pm Grade 1 Modern 5.55 to 6.25 pm Grade 1 Acrobatics 6.25 to 7.25 pm	<b>Relevétion Dance Academy</b>  <b>07500 823 243</b>
<u><b>Relevétion Dance Academy</b></u> <b>Wednesdays</b> Adult Ballet 10.30 to 11.30 am	
<u><b>Relevétion Dance Academy</b></u> <b>Thursdays</b> Pre-Primary Ballet 4.30 to 5.15 pm	
<b>Fridays</b> Qigong with Angela 11.00 am to 12.00 noon	<b>Angela</b>  <b>07762 380 277</b>

If you have any enquiries regarding the Church Hall, please call Sheila on 07803 158235, she will be pleased to help you.

# **NO THANKS**

## **Trick or treaters**

Please DON'T  
knock on this  
door as we  
do not wish  
to take part.

